

D.I.Y. Cyclone Kits: 4" and 2-1/2"

Now you can make a cyclonic separator using your own container. Pre-made cyclone lids restrict you to using a metal garbage pail or 5 gallon pail. With either of these kits, your imagination is the limit. Entry and exit is through the top of the container. No lid? No problem! A piece of plywood works fine. The 4" kit provides the least air restriction for dust collectors. The 2-1/2" kit works best with large shop vacuums. Minimum inside container diameter: 19" for 4" kit; 11" for 2-1/2" kit. Each kit includes 1 inlet elbow assembly and 1 outlet assembly. Due to varying container types, fasteners not included.

#13129 2-1/2" kit **\$19.95** **KL**

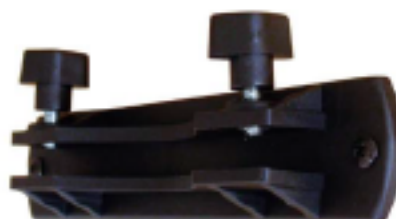
#13130 4" kit **\$29.95** **CG**

Lathe Hood

Lathe dust is extremely fine and potentially toxic when working with exotic woods.

Mount this hood on the back side of the lathe bed and with the proper collector, will collect any and all dust off fine spindle work.

#13105 **\$14.95** **C**



Blast Gate Mount

Mount any standard woodworking blast gate for easier operation. Woodworking blast gates are easier to operate when solidly mounted.

Accepts gates from 2-1/2" to 6"

#13002

\$4.45

BlackJack™ DUST COLLECTION



Pail-Top Cyclone Lid : 2-1/2"

When powered by a traditional shop vacuum, this pail top cyclone performs extremely well. During testing with the usual shop dusts, we found it to trap at least 99% before exiting to the vacuum. It fits snugly onto 12" diameter 4, 5 and 6 gallon pails. Includes internal elbow (not shown) to create cyclonic action.

#13127

\$17.95 **KL**

Grounding kit

Avoid static shock from all-plastic hose and tubing. Wrap them with this 14 gauge stranded wire and ground it to the metal base of the dust collector. No more static. Includes 50' of copper and an assortment of connectors.

#13001

\$14.49



Workshop Supply

Embro ON Canada N0J 1J0

1-800-387-5716

Home of
BlackJack™
Woodworking Tools

Your Next Project Just Got Easier

Shop on-line! Sign up for your free eNewsletter!

www.workshopsupply.com



Y-Fitting 2-1/2"

#13381 **\$5.99** **L**

Y-Fitting 4"

#13071 **\$6.99** **CG**



Y-DC 4" x 4" x 2-1/2"

#13072 **\$6.99**

CLK



Elbow 4" with
flange mount

#13082 **\$7.49** **C**



Elbow 2-1/2"

#13371 **\$5.49** **L**

Elbow 4"

#13081 **\$6.49** **C**



Dust Cap 4"

#13005 **\$0.99** **D**

Dust Cap 5"

#13069 **\$1.39**



Y-5" x 4" x 4" **CG**

#13068 **\$7.99**



45 degree Elbow 4"

#13070 **\$5.79** **C**

45 degree Elbow 2-1/2"

#13097 **\$1.49** **L**



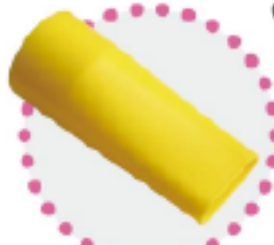
Y-6" x 4" x 4" **CG**

#13073 **\$7.99**



Flared Nozzle 2-1/2"

#13076 **\$2.99** **KN**



2-1/2" Tapered Nozzle

#13075 **\$2.99** **KN**

4" Tapered Nozzle

#13076 **\$4.59** **EG**



Bench Wand 4"

#13077 **\$19.99** **E**



A. Universal Adapter 1" to 6"

#13360 **\$4.95**

B. Universal adapter
3/4" to 2-3/4"

#13359 **\$3.95**



Hanger Straps, Pair

#13332 2-1/2" **\$2.45**

#13335 4" **\$2.95**



Hanger Hooks
for 4" hose, Pair

#13336 **\$5.99**



Wire Hose Clamp

| Part # | Size | 1 |
|--------|--------|-------------|
| 13016 | 2" | .99 |
| 13331 | 2-1/2" | .99 |
| 13017 | 3" | .99 |
| 13021 | 4" | .99 |
| 13018 | 5" | 1.39 |
| 13019 | 6" | 1.59 |



Key Hose Clamp

The key-handle feature of these clamps allow them to be finger tightened without the need for a screwdriver or wrench.

| Part # | Size | 1 |
|--------|--------|-------------|
| 13333 | 2-1/2" | 1.60 |
| 13020 | 4" | 1.70 |



Aluminum Blast Gates

We offer two styles of 4" gates. The original gate has a guillotine-style close. An open area opposite the sliding gate has air loss to avoid dust buildup. The new gate is self clearing because the gate passes through completely.

- a. #13033 4" Thu-style **\$12.50** **C**
 b. #13032 4" Original **\$11.99** **C**
 #13125 5" Original **\$15.95**
 #13126 6" Original **\$19.95**

Hose Cuff

Soft rubber hose cuffs available in 2-1/2" and 4" size thread onto the outside of dust collection hose.

They stretch easily onto oversize fittings like those on cast bodied band saws and metal planer hoods. They also protect the end of the hose from damage. I have these in my own shop and I really like them.

#13078

Hose Cuff 4" **\$13.49**

#13079 Hose Cuff 2-1/2" **\$7.99**



System Tubing

2-1/2" x 36"

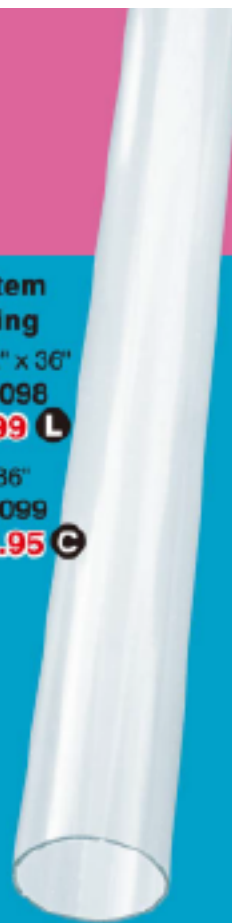
#13098

\$7.99 **L**

4" X 36"

#13099

\$15.95 **C**



Which fittings work together?



Many dust fittings connect together directly. There's no need for short pieces of hose and clamps. Follow the codes on the previous pages to plan or expand your dust collection system. Here's how to use the codes to connect fittings together:

- If the fitting has one letter: the ends are all the same.
- If it has two or more letters: the ends are different or the inside and outside can connect to other fittings

Note:

#13073 6 x 4 x 4 Y is slightly large. A mating fitting will need to be heated to install on #13073.

#13096 2-1/2" coupling fits loosely on several fittings.

ABS/PVC glue solves this problem.

Stop guessing!

Here's what works:

- A** fits into **B** or 4" hose
- C** fits into **D** or 4" hose
- E** fits into 4" PVC hose
- F** fits into **G** (3.5" to 3.7")
- J** fits into **K** (shop vac)
- L** fits into **M** or 2-1/2" hose
- N** fits into 2-1/2" hose
- A** fits into **D** but it's loose and must be fastened with screws.



Blast Gate M/M 2-1/2"
#13341 **\$2.89**^L
Blast Gate Tapered M/M 4"
#13031 **\$4.29**^A



Blast Gate Tapered M/F 4"
#13041 **\$4.49**^{A D}



Blast Gate Threaded/Male 4"
#13040 **\$6.49**^{E A}
Blast Gate Threaded/F 4"
#13042 **\$6.49**^{E D}



Adapter 2-1/2" to 1-1/4"
#13400 **\$1.97**^L
Adapter 2-1/4" to 1-1/2"
#13401 **\$1.49**^J
Adapter 1-1/2" to 2-1/4"
#13402 **\$1.49**^J
Adapter 2-1/2" to 1-1/2"
#13351 **\$1.49**^L
Adapter 2-1/2" to 1-3/4"
#13352 **\$1.99**^L



Blast Gate Threaded
4" M/M
#13067 **\$6.49**^E



Blast Gate 4" F/F
#13066 **\$4.79**^D



Self clearing Blast Gate
4" M/M
#13065 **\$5.79**^A



Reducer Off Centre
4" to 2-1/4"
#13063 **\$2.99**^{C J}



Tapered Reducer 4" x 2"
#13388 **\$2.49**^G



Tapered Reducer 4" x 2-1/4"
#13389 **\$2.49**^{C J}
Tapered Reducer 4" x 2-1/2"
#13390 **\$2.49**^{C K L}



Adapter, Hose
2-1/2" to 2-1/4"
#13391 **\$2.29**^{L J}



Tapered Adapter 4" to 2-1/2"
#13061 **\$3.49**^{B N K}
Tapered Adapter 4"
#13062 **\$3.79**^{B E}



Reducer 4" to 2-1/2"
#13051 **\$2.49**^{C L}
Reducer 3" F to 2-1/2" M
#13052 **\$1.95**^L



Splicer 2-1/2" Male
#13090 **\$2.49**^{K L}
Splicer 4" Male
#13091 **\$4.79**^C



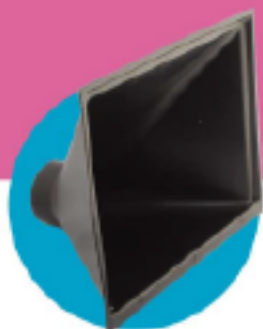
Splicer 4" tapered male
x 4-1/8" lg #13092 **\$3.99**^B
Splicer 4" straight male
x 3-1/2" lg #13093 **\$5.95**^D
Clear Splicer 2-1/2" #13096 **\$.99**^M



Adapter 2-1/4" to 4"
#13409 **\$3.99**^{J G}



Adapter 2-1/2" to 2-1/4"
#13407 **\$2.49**^J
Adapter 4" to 3-11/16"
#13410 **\$3.95**^F



Big Gulp Dust Hood
4" x 16" x 13"

#13121 **\$16.95** **CG**



Dust Hood
4" x 13-1/2" x 7-1/4"

#13120 **\$8.49** **C**



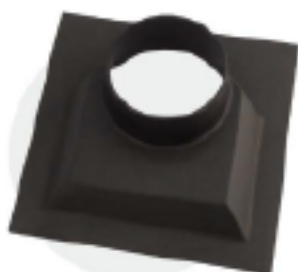
4" Hood 4" x 10"

#13404
\$5.29 **CG**



2" Bandsaw Dust Chute
for under table

#13107 **\$6.97**

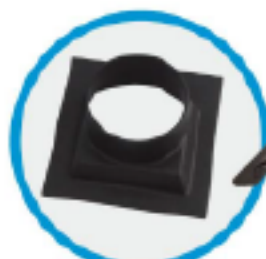


Hood 4" - 8-1/4" wide

#13102 **\$3.99** **A**

Hood 4" - 10-1/4" wide

#13103 **\$4.99** **A**



Hood 4" - 6-1/4" wide

#13104 **\$3.59** **A**



Floor Sweep 4"
(Length 24")

#13111 **\$6.99** **A**



Hood 4" -
4-1/2" x 9-1/2"

#13403 **\$4.99** **AG**



Universal Adapter

#13361 2-1/2" **\$2.69** **KL**

#13405 4" **\$4.49** **A**

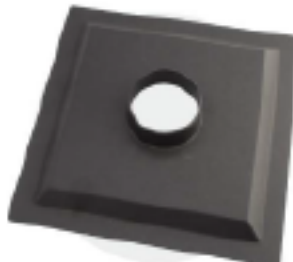
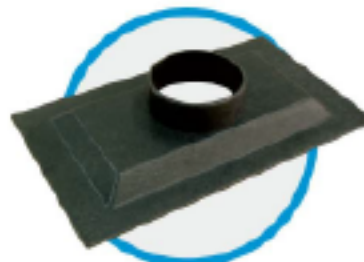


Table Saw
Dust Hood 14"

#13101 **\$7.99** **A**



Hood 4" - 8" x 13-1/2"

#13408 **\$7.99** **A**



2-1/2" Fence Adapter

#13406
\$4.99 **KL**



Adapter 2-1/2"

#13362 **\$2.69** **KL**

Adapter 4"

#13055 **\$4.59** **CG**



4" hose to
PVC fitting

#13053 **\$4.59** **C**



4" PVC hose to
PVC pipe

#13054 **\$4.59** **E**



Multi-use
Adapter 2-1/2"

#13064 **\$2.99** **KL**

BlackJack™

DUST COLLECTION



Positionable Vacuum Hose

Capturing dust off the drill press, router or other tool is no longer difficult. This segmented hose flexes to a position and stays there. Nozzles "pop" on and off. Connect directly to 2-1/2" hose and 2-1/4" shop vacuum hose. (Optional adapter for 4" hose.) Standard kit includes: nozzle B, nozzle C, connector D, mounting bracket E and 12 segments of hose (2 x A) approx. 15"

#13030 Positionable Vacuum Hose kit

(1 x B, C, D, E and 2 x A) — **\$44.95**

A. #13029 Vacuum Hose - 6 segments — **\$10.69**

B. #13028 Rectangular Nozzle 3-1/2" x 6" — **\$ 5.80**

C. #13027 Tapered Nozzle 1-3/8" x 5/8" — **\$ 5.80**

D. #13025 2-1/2" Connector — **\$ 4.80** **(K L)**

E. #13026 Universal Mounting Bracket — **\$14.99**

F. #13063 4" Adapter — **\$ 2.99** **(G J)**



Adjusta-Flex Hose

Now you can point a dust collection hose where you want it and have it stay. Adjusta-Flex hose extends, retracts, bends and stays where you put it. Perfect for picking up dust at the router and drill press. Ground it through the helix to dissipate annoying static charge.

#13311 Adjusta-Flex 2" x 39" — **\$ 8.95**

#13388 2"- 4" Adapter — **\$ 2.49** **(C)**

#13314 Adjusta-Flex Mount 2" — **\$14.99**

#13312 Adjusta-Flex 2-1/2" x 39" — **\$10.95**

#13090 2-1/2" - 2-1/2" Splicer — **\$ 2.49** **(K L)**

#13390 2-1/2" - 4" Adapter — **\$ 2.49** **(G L)**

#13315 Adjusta-Flex Mount 2-1/2" — **\$14.99**

#13313 Adjusta-Flex 4" x 39" — **\$12.95**

#13091 4" Splicer — **\$ 4.79** **(C)**

#13316 Adjusta-Flex Mount 4" — **\$17.99**



89 Dust Collection

Workshop Supply

Embro ON Canada N0J 1J0

1-800-387-5716

Home of

BlackJack™

Woodworking Tools

Your Next Project Just Got Easier

Shop on-line! Sign up for your free eNewsletter!

www.workshopsupply.com